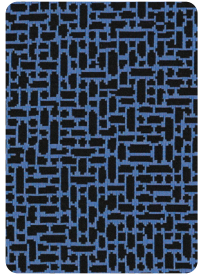


**PATTERN INFO**

<b>Content:</b>	74% Post Consumer Recycled Polyester, 26% Nylon
<b>Finish/Backing:</b>	alta + Acrylic Backing
<b>Application:</b>	Upholstery
<b>Repeat:</b>	H: 9 ½" x V: 9 ½"
<b>Width:</b>	54"
<b>AC#:</b>	62210 - 62222
<b>Skus:</b>	13

**ENVIRONMENT**

- AB-2998 Compliant: Flame Retardant Free
- Meets Criteria for Healthier Hospital Initiative
- Antimicrobial Free | Antibacterial Free
- PFAS Free (including PFOA & PFOS Free)
- BPA, TRIS Free
- Formaldehyde Free
- PVC Free
- Phthalate Free
- Lead Free
- Heavy Metal Free
- Does Not Contain Conflict Minerals
- Proposition 65 Compliant
- LBC Red List Free
- REACH Compliant
- RoHS Compliant
- Low VOC's
- Contributes to LEED Certification
- Recycled Content

**PERFORMANCE**

- Abrasion Resistant
- Bleach Cleanable
- Water Based Stain Resistance

**TESTING**

This fabric has passed:

**Flammability:** California Bulletin #117-13; UFAC: Class 1 / NFPA 260

**Abrasion:** 150,000\* Double Rubs (Wyzenbeek Method)

\*Abrasion test results exceeding ACT Performance Guidelines are not an indicator of product lifespan. Multiple factors affect fabric durability and appearance retention.

**Lightfastness:** 40 Hours

**CLEANING**

Code: WS

Can be cleaned using 20% bleach maximum / 80% water solution.

Great Wall is part of the Voyager Collection. Other patterns in this collection include Hanji, Saxon, and Sundial.

Custom colors are available through our Options® Studio.